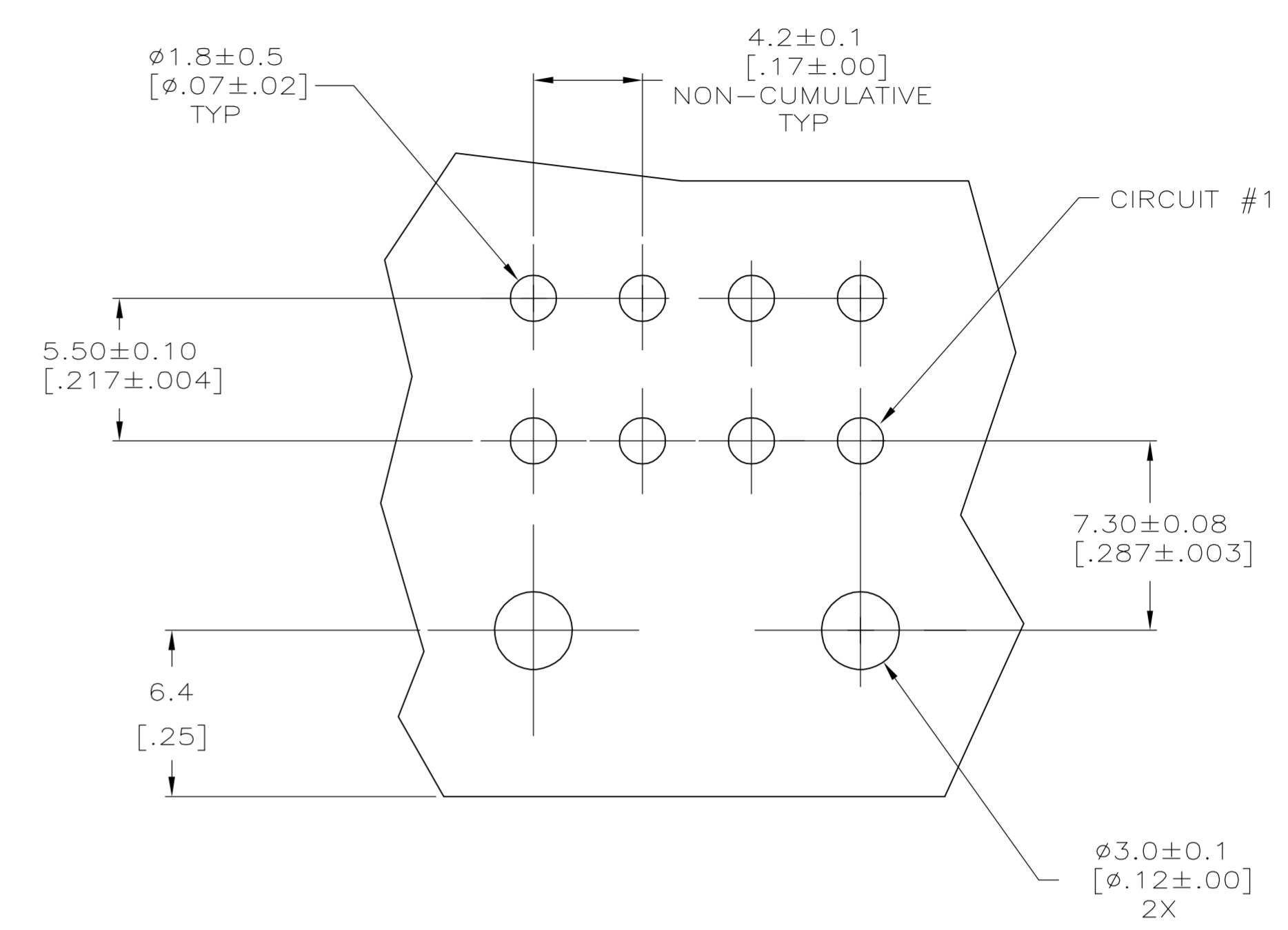
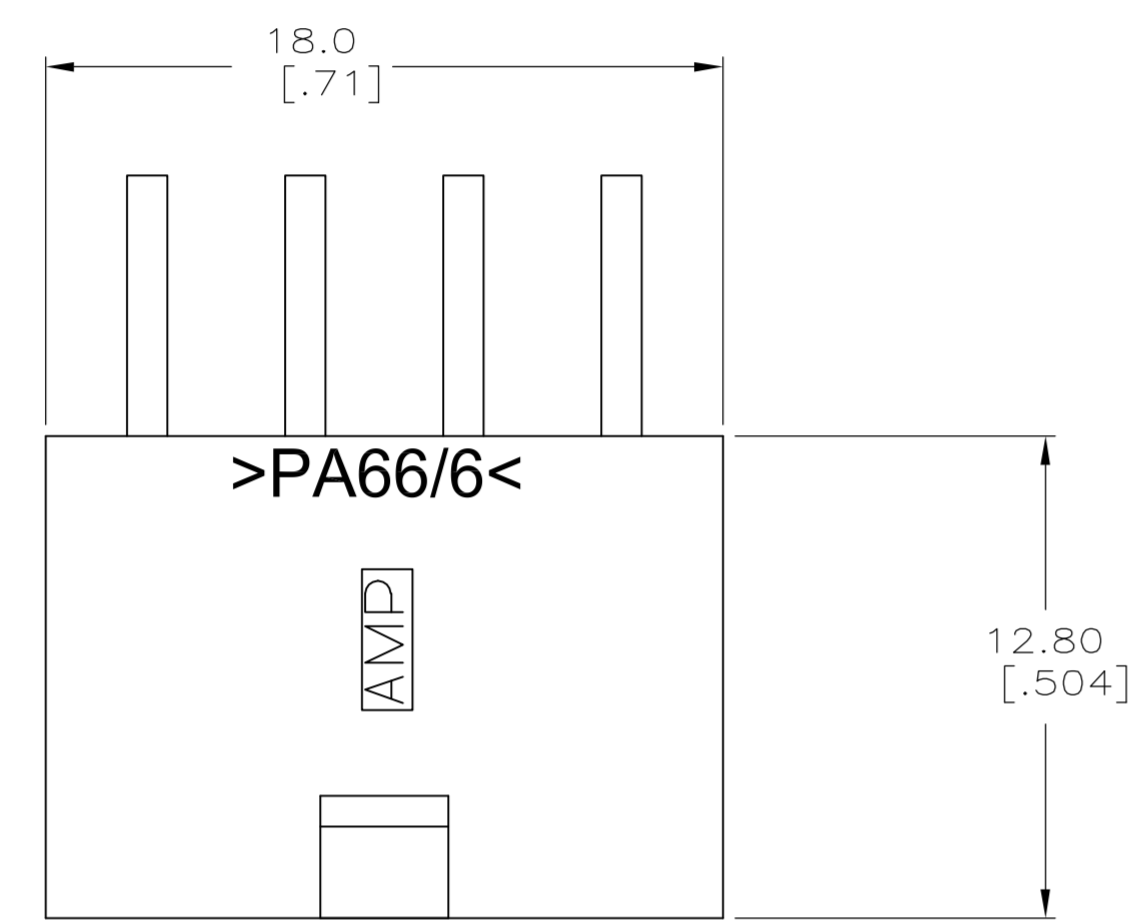
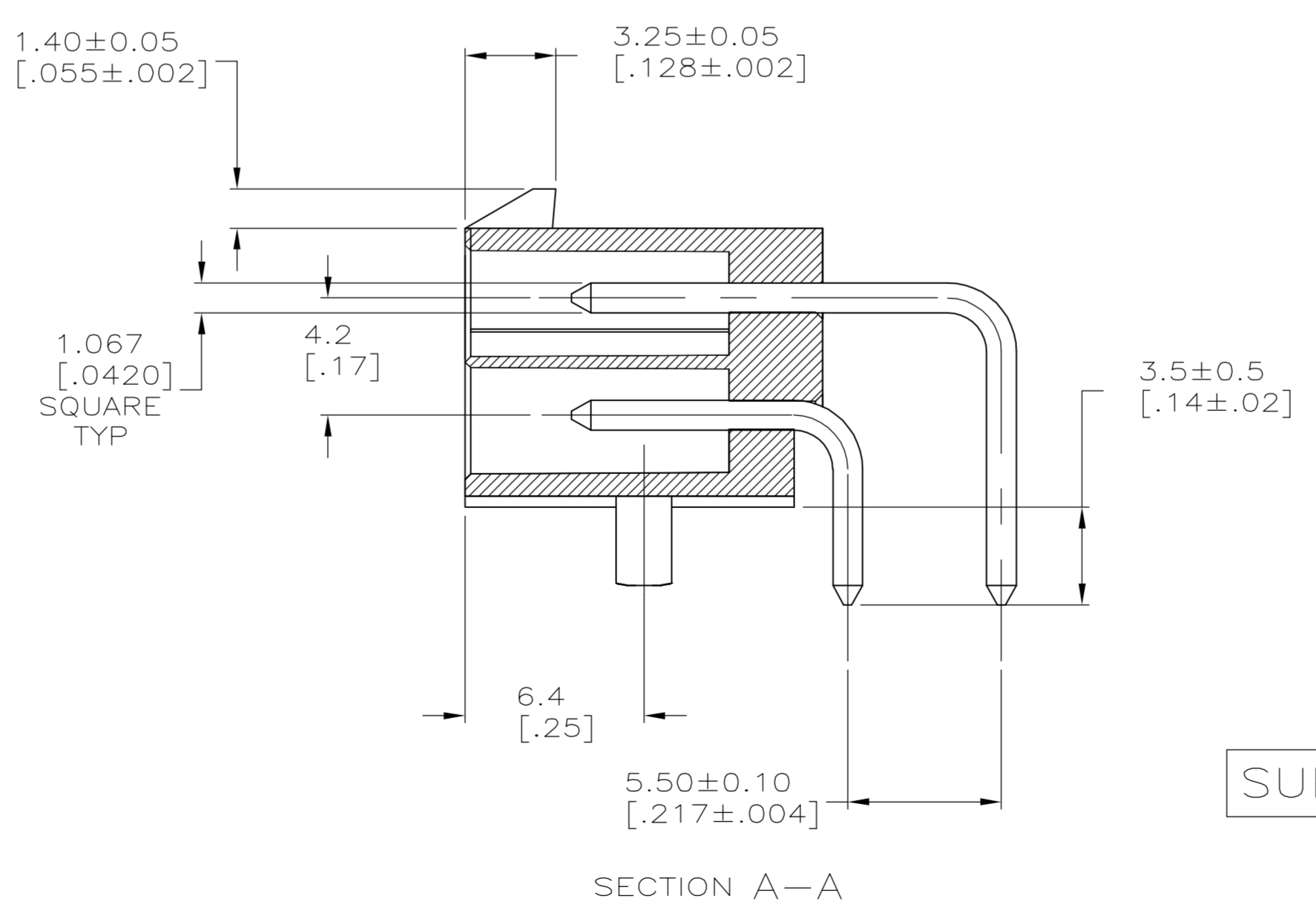
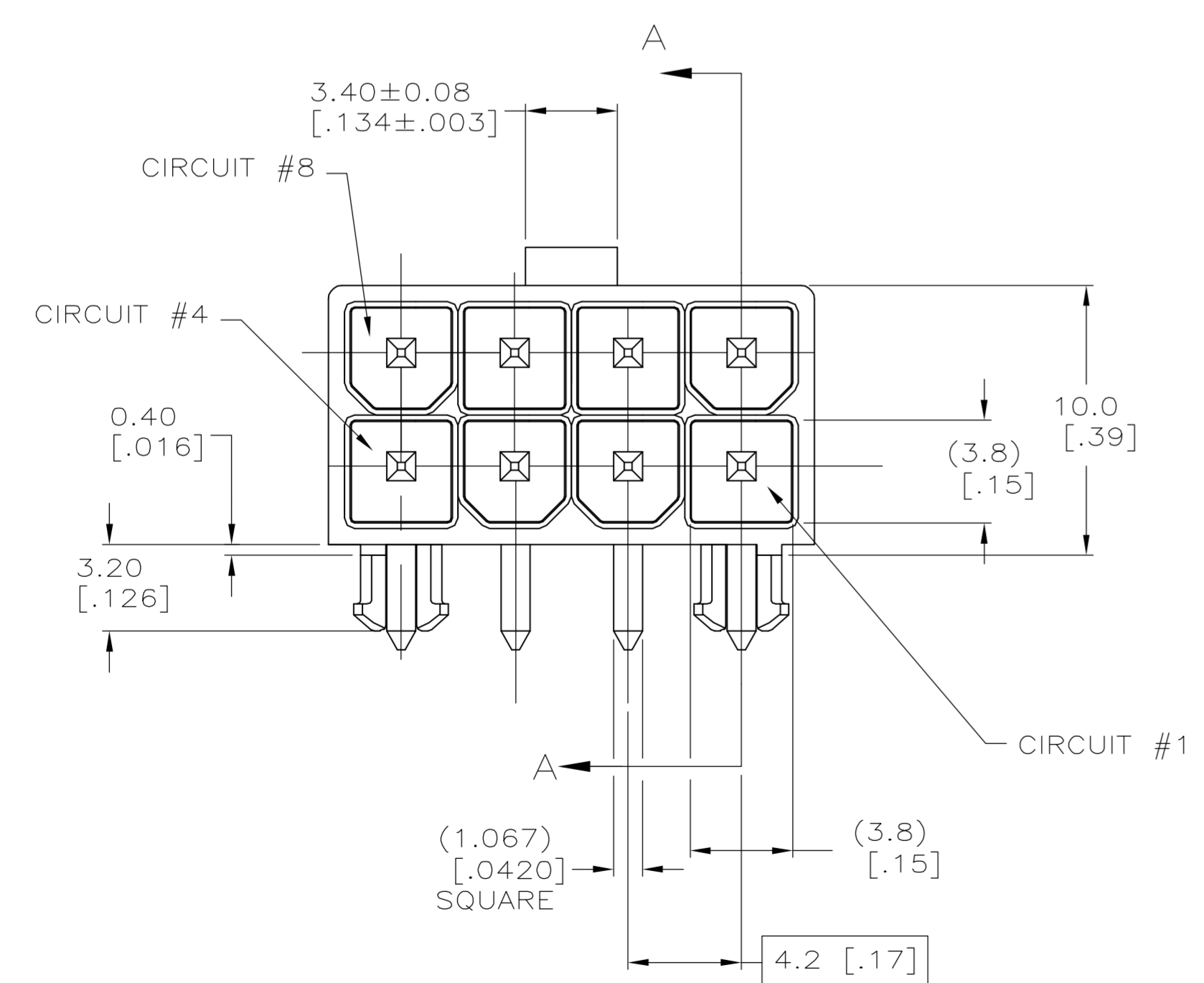


- ① MATERIAL: HOUSING - NYLON, UL94V-0 (COLOR - WHITE).
PIN - 1.067mm² [.0017in²] COPPER ALLOY.
- 2. PINS TO COMPLY WITH SOLDERABILITY SPEC 109-11-3.
- ③ 0.00381 [.000150] MINIMUM TIN LEAD OVER 0.00127 [.000050] MINIMUM NICKEL, ENTIRE LENGTH OF PIN.
- ④ NOTE DELETED.
- ⑤ 0.00381 [.000150] MINIMUM TIN OVER 0.00127 [.000050] MINIMUM NICKEL, ENTIRE LENGTH OF PIN.



RECOMMENDED MOUNTING HOLE PATTERN FOR 1.78 [.070] MAX THICK P.C. BOARD COMPONENT SIDE SHOWN



SUPERSEDED BY 1-794529-1

①	⑤	①	①	1-794529-1
①	③	①	①	794529-1
MATERIAL		FINISH		ASSEMBLY
PIN		HOUSING		

METRIC

THIS DRAWING IS A CONTROLLED DOCUMENT.

DIMENSIONS: mm [INCHES]	TOLERANCES UNLESS OTHERWISE SPECIFIED:	DWN S. HOOVER 02-MAR-2005	APVD D. COLEY 02-MAR-2005	NAME D. COLEY 02-MAR-2005	TYCO Electronics Tyco Electronics Corporation Harrisburg, Pa 17105-3608
0 PLC ± .02 [0.1]	1 PLC ± .013 [0.005]	PRODUCT SPEC 108-1646		ASSEMBLY, HEADER, RIGHT ANGLE, 8 POSITION, W/PEGS, 94V-0, AMP-DUAC(TM) POWER CONNECTOR	
2 PLC ± .013 [0.005]	3 PLC ± .013 [0.005]	APPLICATION SPEC 114-6067		SIZE A1	CAGE CODE DRAWING NO 00779
4 PLC ± .013 [0.005]	ANGLES ± 30°	WEIGHT		SCALE 5:1 SHEET 1 OF 1 REV D	
MATERIAL SEE CHART	FINISH SEE CHART	CUSTOMER DRAWING		©=794529	